

Concrush Increase to Capacity Project

PROJECT INFORMATION SHEET No.3

April 2022

Concrush is a locally owned and operated business located at 21 Racecourse Road, Teralba NSW. The company was established in 2002 after recognising the need for a construction and demolition recycling facility in the Lake Macquarie region.

Concrush is well respected within the local industry and has a reputation for providing high quality recycled products and sound environmental management of their operations.

On the 27th March 2020 Concrush received approval from the NSW Department of Planning, Industry and Environment for the “Expansion of the Concrush Resource Recovery Facility – SSD 8753”

Additions to the existing facility will be required to process and store the increased level of throughput and include:

- Establishment of a hardstand area;
- Establishment of concrete walls and concrete material storage bays using concrete building blocks;
- Establishment of vehicle washing bays;
- Establishing additional waste stockpiles;
- Establishing landscape mounds on perimeter and installing security fencing; and
- Establishing a second set of weighbridges (in and out).
- Constructing a new Concrush Access Intersection Road Widening and Drainage Works according to PWC/29/2020

What is the Project?

To meet continued growth in the demand for recycled waste products in both the domestic and commercial markets, Concrush received approval to allow for the gradual increase in throughput capacity to up to 250,000 tonnes of waste material recycled per annum.

The Project will help achieve NSW government waste avoidance strategies by providing an opportunity to divert waste from landfill and to increase construction and demolition waste recycling.

The footprint will be increased by 2.4 hectares (refer to **Figure 1** below).

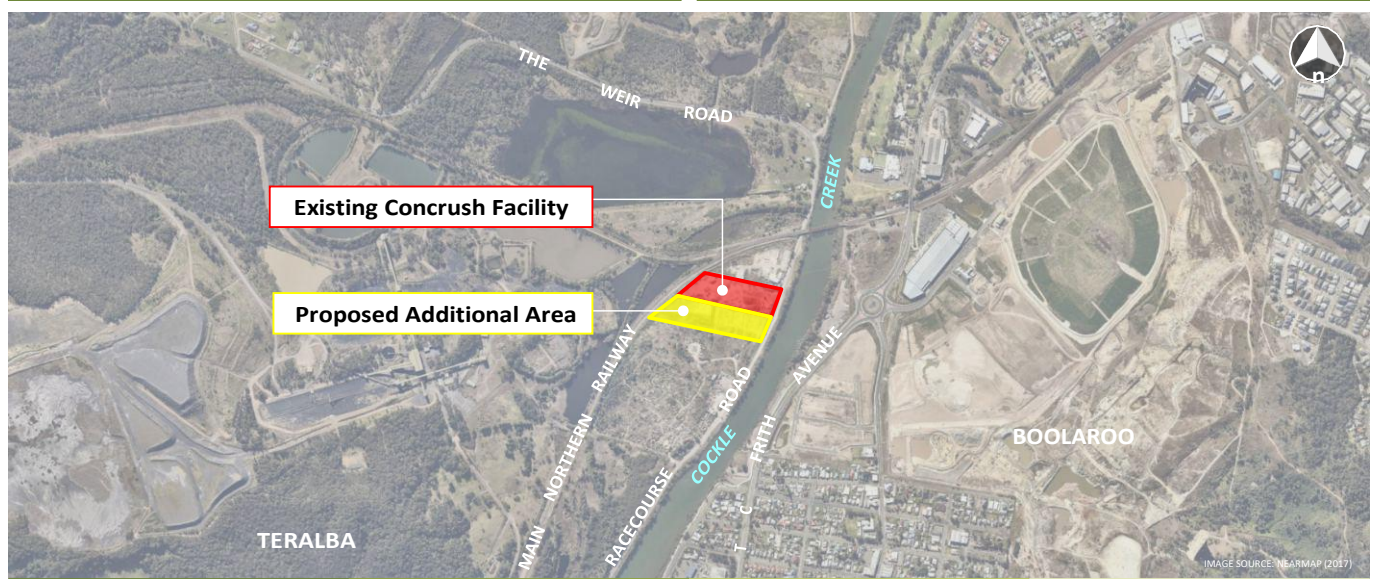


Figure 1 - Project location

What is the expansion works time frame?

Our internal construction works are ongoing

Our Access Intersection and Road Widening will commence on 16/5/2022

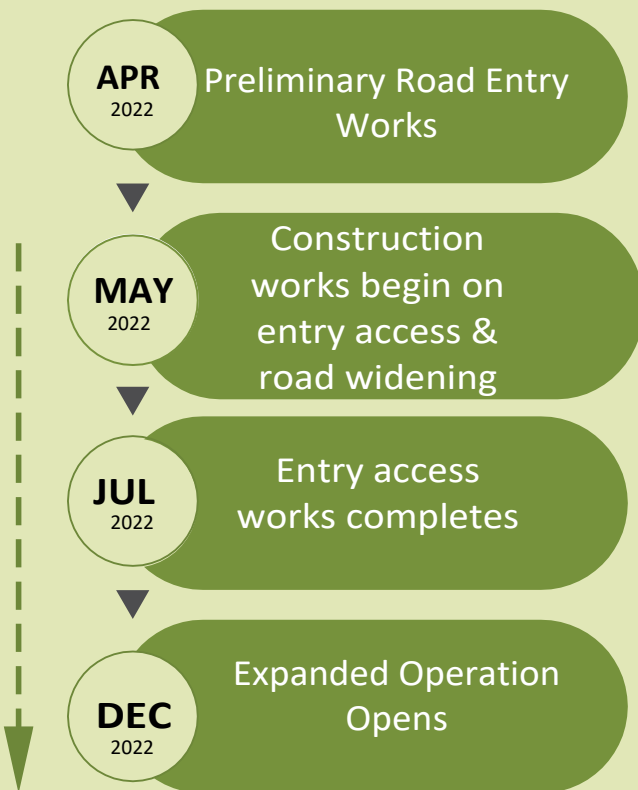


Figure 2 - Expansion Timeline

Contact Information

If you would like to know more about the Project, please contact:



Kevin Thompson

kevin@concrush.com.au

t. (02) 4958 3777

m. 0408 687 093

w. www.concrush.com.au

For further information on products or enquiries contact the Concrush team on **(02) 4958 3777** or visit Concrush's website at www.concrush.com.au

Opening hours:

Monday to Friday from 7:00am – 5.00pm
(weighbridge closes at 4.45pm)

Saturday 7:00am – 4.00pm
(weighbridge closes at 3.45pm)

